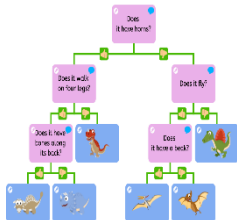


## Computing

We have been completing a condensed block of computing over this week and next. Our unit this term is on databases. We will learn how to plan and create a branching database - which links nicely to our science topic on classification.



## RE

We have been considering how Christians view the ideas of resurrection and salvation connected to the Easter story and Holy Week and will **visit the Baptist Church on Tuesday morning** to consolidate this learning.

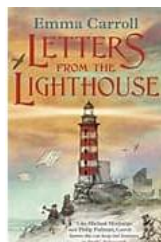
**Please make sure your child brings a coat to school.**



## ENGLISH

Next week, in English, we will be starting to write our persuasive speech, linking it to our wartime novels. We aim to persuade parents to evacuate their children from war-torn London. We will then look at editing it and practise reading it aloud to others.

In Guided Reading, we will be continuing to read 'Letters from the Lighthouse' by Emma Carroll.



## Spelling

Please encourage your child to practise the spellings they have been taught.

This week's words: certainly, definitely, frequently, infrequently, obviously, occasionally, often, probably, possibly, rarely



## Year 5



Dear Parents / Carers,

Thank you for attending parent consultations, it is always helpful to chat about how your children are doing.

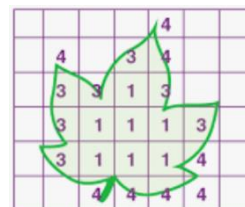
## VE Day party

We will be marking the end of our Dig for Victory topic with a VE Day Tea Party **on Wednesday 27<sup>th</sup> March**. If possible, we would like children to come dressed in 1940s/WW2 themed outfits. **Please do not feel the need to go out and buy a special outfit**, children can come as evacuee children and wear simple outfits such as: **Boys** could wear a cap or woollen hat and have knee-length shorts (or trousers tucked into knee length socks). **Girls** could wear a beret, headscarf or woollen hat and a simple knee-length dress or skirt.

**Please note that the term will end on THURSDAY 28<sup>th</sup> March.**

## MATHS

This week we have looked at finding the perimeter of rectangles, rectilinear shapes and composite shapes, using lots of ways of measuring. We have also looked at finding the area of regular shapes.



Next week, we will be moving onto looking finding the area of irregular shapes.

**Please encourage your child to use TTRS to develop fluency in their number skills.**

## Library

The children will be utilising the library on a Friday where they will be able to take books out. We are pleased to announce that children are now able to, again, take library books home. Please encourage to children to treat school library books with respect and return them promptly.

**Please encourage your child to read at home at least 20 minutes each day.**

## PE Sessions / Forest Area

Our scheduled PE days are:

**Outdoor PE:** Monday

**Indoor PE:** Gorillas & Koalas: Tuesday

**Indoor PE:** Wolves: Thursdays

**Forest Area:** Alternate Thursdays

Please ensure your child's PE kit is equipped for both indoor and outdoor PE. Forest Area clothing needs to be clothing that is weather appropriate and ok to get dirty; it should fully cover arms and legs.

**WE WILL NOT BE VISITING THE FOREST AREA NEXT WEEK**

## Home Learning

As outlined by Miss Green, earlier in the year, we would like all children to focus on **reading** for their home-learning. Please support your child to read daily.

We would also like the children to use TTRS to work on times tables fluency, and to practise the spellings they have been taught during the week.

## Communication

If you have any concerns or wish to discuss any aspect of your child's learning please feel free to contact, Ms Barks (Gorillas), Miss Sparkes (Koalas) or Mrs Cobbe (Mon-Wed)/Mrs Norman (Wed-Fri) (Wolves)

Ms Barks – [abarks@waterbeach.cambs.sch.uk](mailto:abarks@waterbeach.cambs.sch.uk)

Mrs Cobbe – [jacobbe@waterbeach.cambs.sch.uk](mailto:jcobbe@waterbeach.cambs.sch.uk)

Mrs Norman – [enorman@waterbeach.cambs.sch.uk](mailto:enorman@waterbeach.cambs.sch.uk)

Miss Sparkes – [asparkes@waterbeach.cambs.sch.uk](mailto:asparkes@waterbeach.cambs.sch.uk)

YEAR FIVE  
COMMON  
EXCEPTION WORD  
SPELLINGS

Accommodate

Accompany

According

Achieve

Aggressive

Amateur

Ancient

Apparent

Appreciate

Attached

Available

Average

Awkward

Bargain

Bruise

Category

Cemetery

Committee

Communicate

Community

Competition

Conscience

Conscious

Controversy

Convenience

Correspond

Criticise

Curiosity

Definite

Desperate

Determined

Develop

Dictionary

Disastrous

Embarrass

Environment

Equip (-ped, -  
ment)

Especially

Exaggerate

Excellent

Existence

Explanation

Familiar

Foreign

Forty

Frequently

Government

Guarantee

Harass	Necessary	Pronunciation	Soldier
Hindrance	Neighbour	Queue	Stomach
Identity	Nuisance	Recognise	Sufficient
Immediate(ly)	Occupy	Recommend	Suggest
Individual	Occur	Relevant	Symbol
Interfere	Opportunity	Restaurant	System
Interrupt	Parliament	Rhyme	Temperature
Language	Persuade	Rhythm	Thorough
Leisure	Physical	Sacrifice	Twelfth
Lightning	Prejudice	Secretary	Variety
Marvellous	Privilege	Shoulder	Vegetable
Mischievous	Profession	Signature	Vehicle
Muscle	Programme	Sincere(ly)	Yacht

